



孕龍科技股份有限公司
ZeroPlus Technology Co., Ltd.

SPECIFICATION

MODEL: B09015-LAP-DALI Interface-M

PART NO: _____

VERSION: V1.01

| Approver | | Check | Design |
|----------|----|-------|--------|
| GM | PM | | |
| | | | |

| Customer Confirm |
|------------------|
| |

*Please fax the file to ZeroPlus Technology after signing.

2F, NO.123, Jian Ba Rd,
Chung Ho City, Taipei Hsian, R.O.C.

Tel:+886-2-66202225
Fax:+886-2-22234362



Content

| | |
|--------------------------------|----|
| 1. Software Download..... | 3 |
| 2. Software Installation | 6 |
| 3. User Interface..... | 10 |
| 4. Operating Instructions..... | 11 |



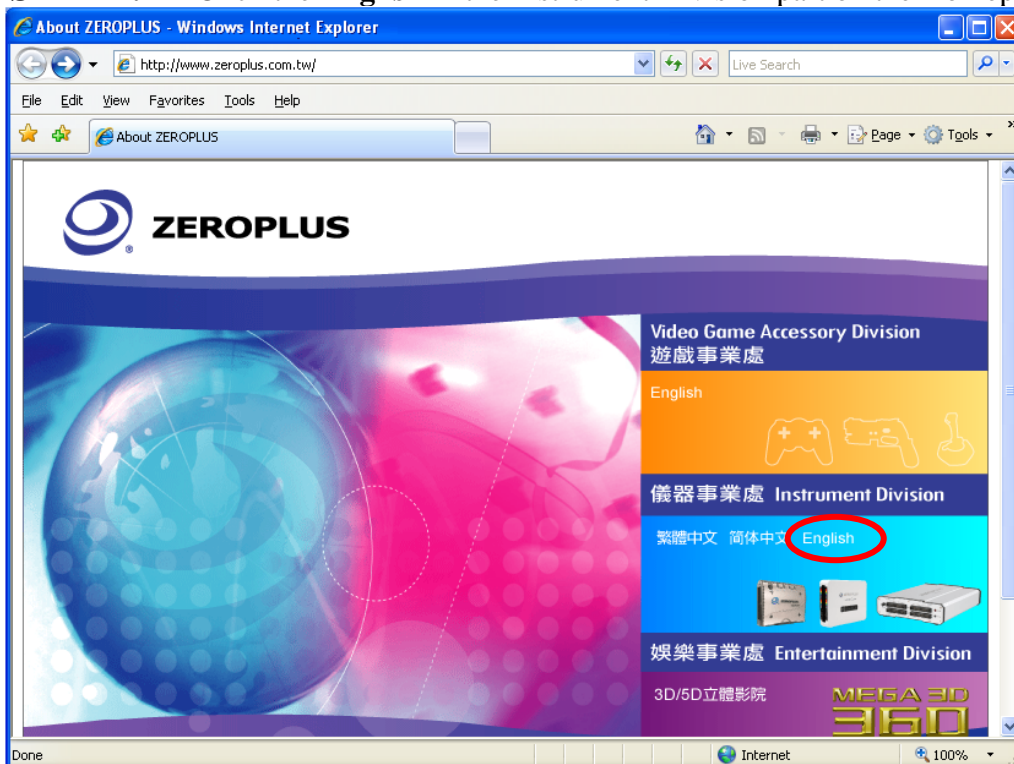
1. Software Download

Please install the software as the following steps:

Remark: We won't have additional notice for you, when there is any modification of the module specification. If there is some unconformity caused by the module version upgrade, users should take the module software as the standard.

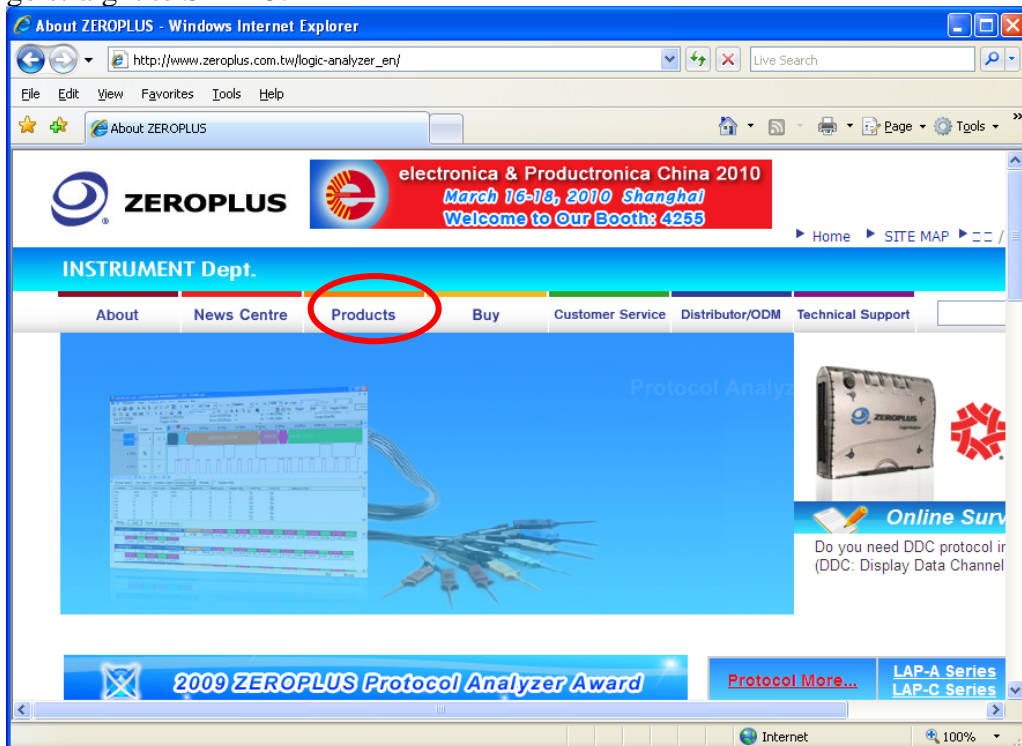
STEP 1. Visit the website of ZeroPlus: <http://www.zeroplus.com.tw>.

STEP 2. Click the **English** in the Instrument Division part on the Homepage.

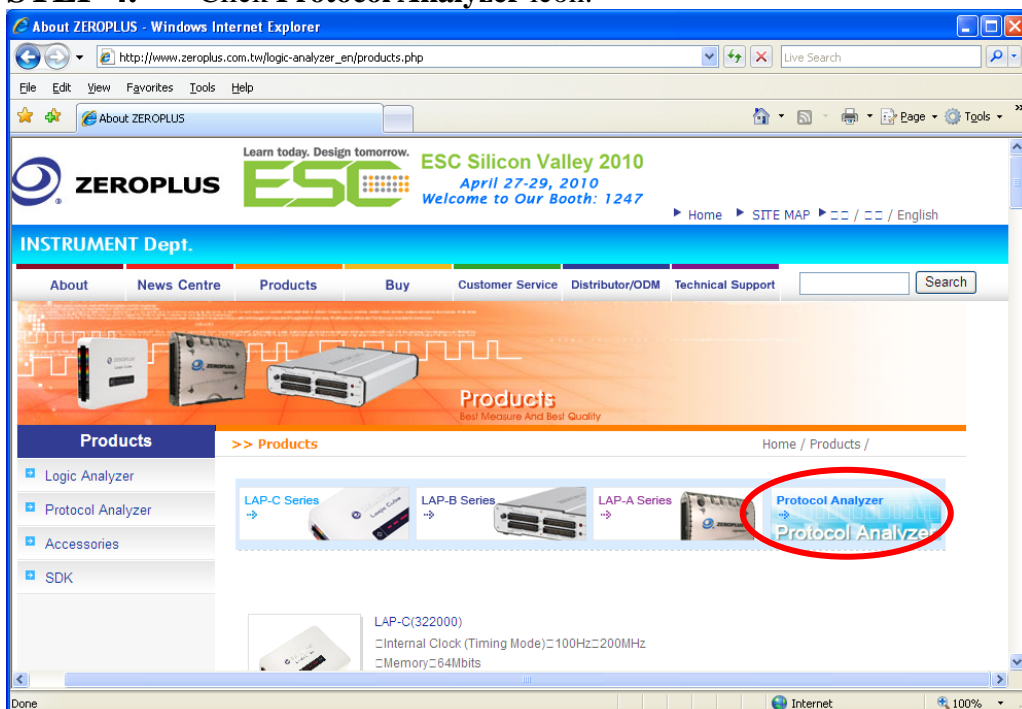




STEP 3. Click **Products** menu or select **Protocol Analyzer** item from its pull-down menu to go straight to STEP 5.

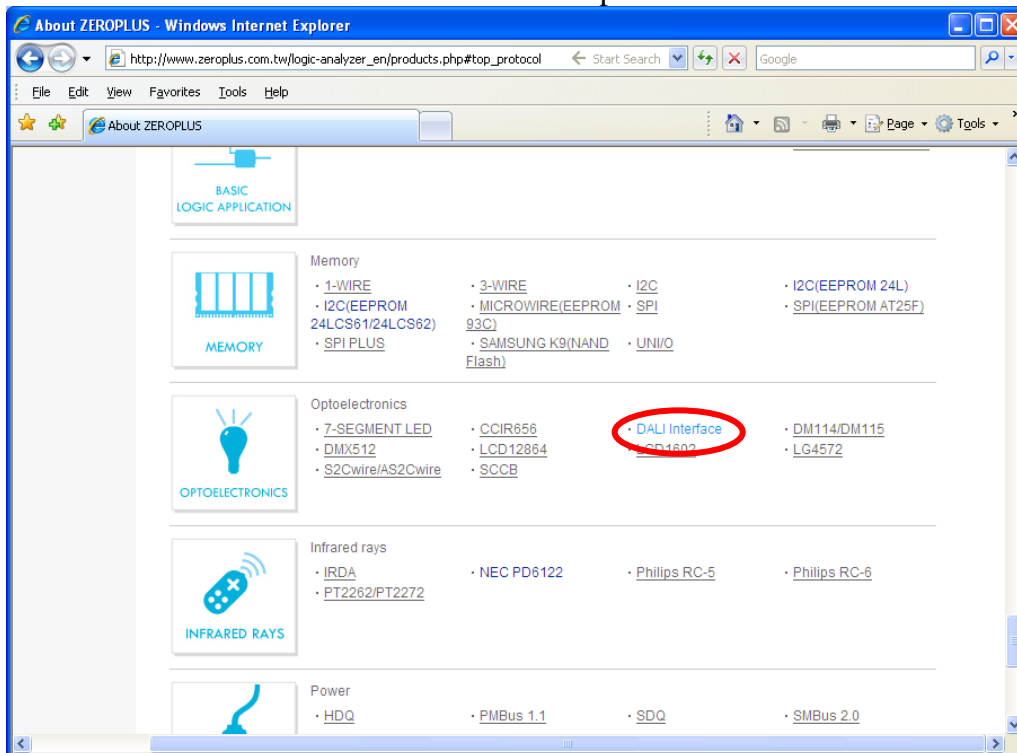


STEP 4. Click **Protocol Analyzer** icon.

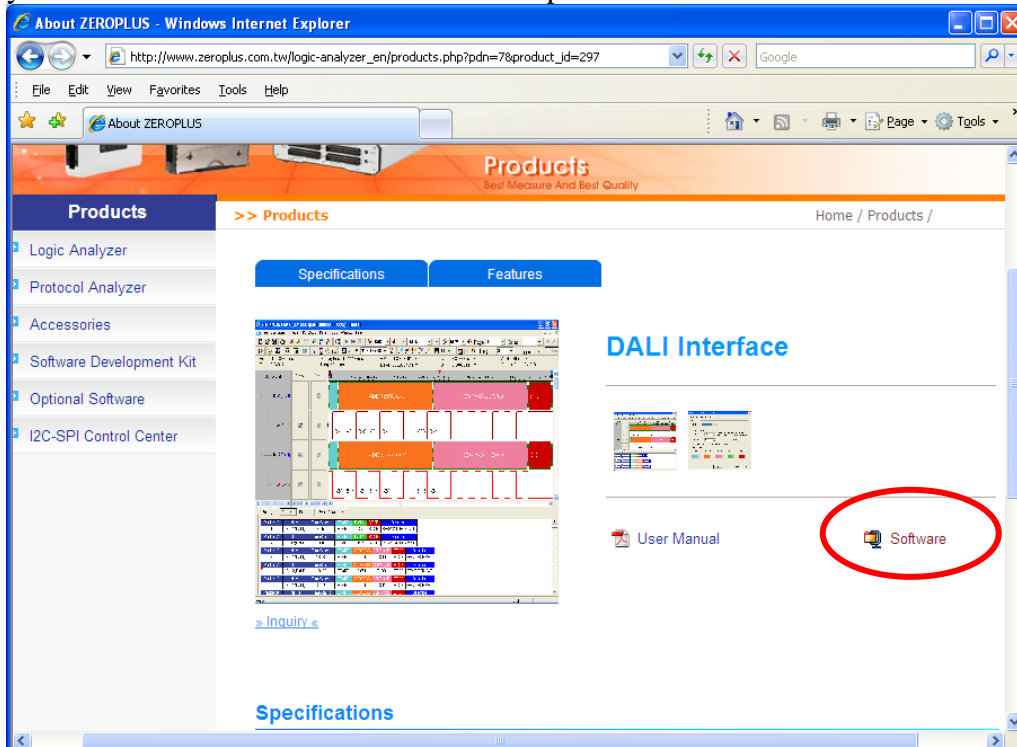




STEP 5. Click **DALI Interface** in the Optoelectronics.



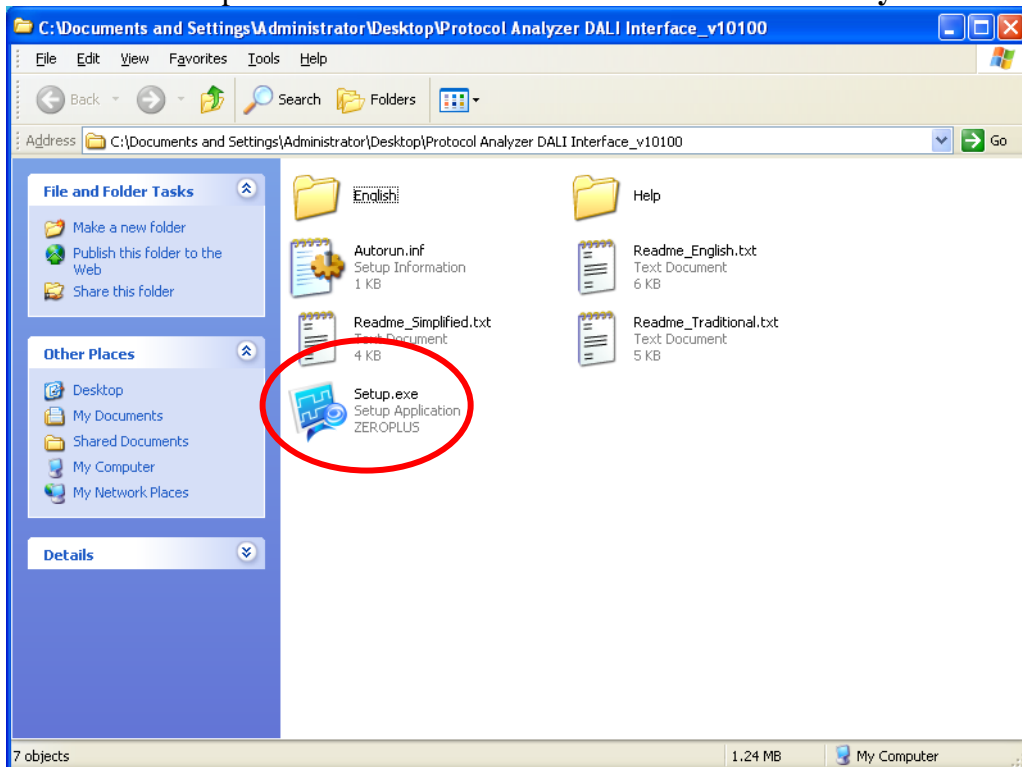
STEP 6. Click **Software** in the Products page. When the File Download dialog box appears, you can click **Save** button to save the compressed files.



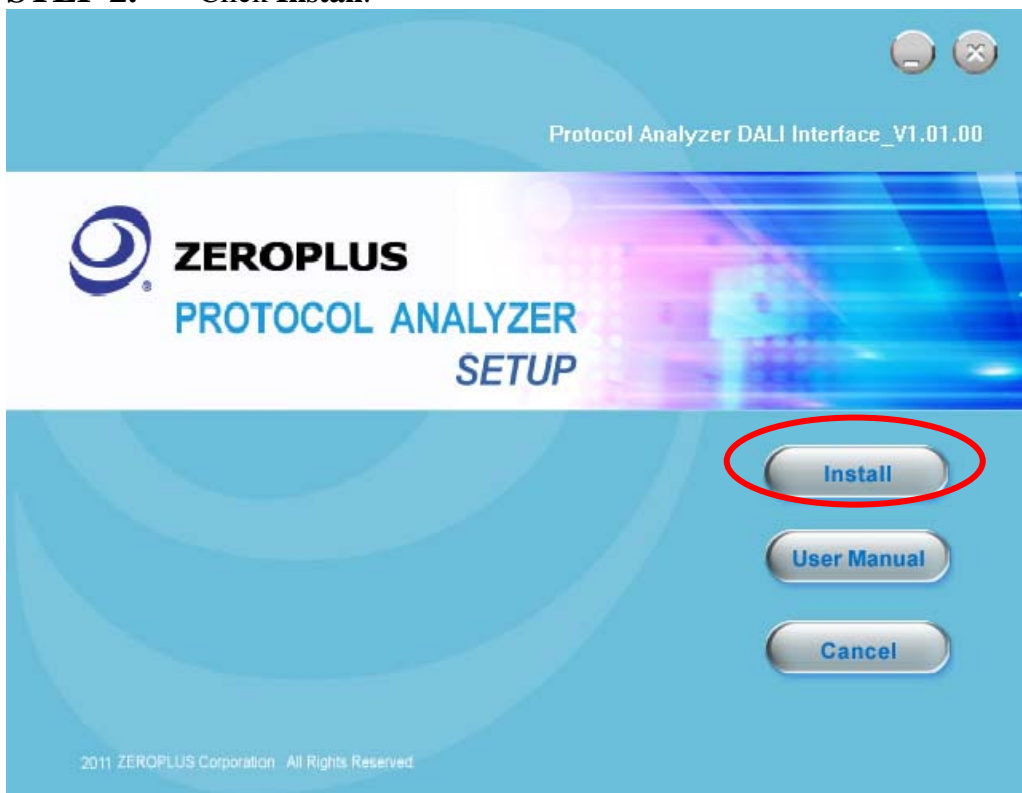


2. Software Installation

STEP 1. Open the downloaded folder to install **Protocol Analyzer DALI Interface**.

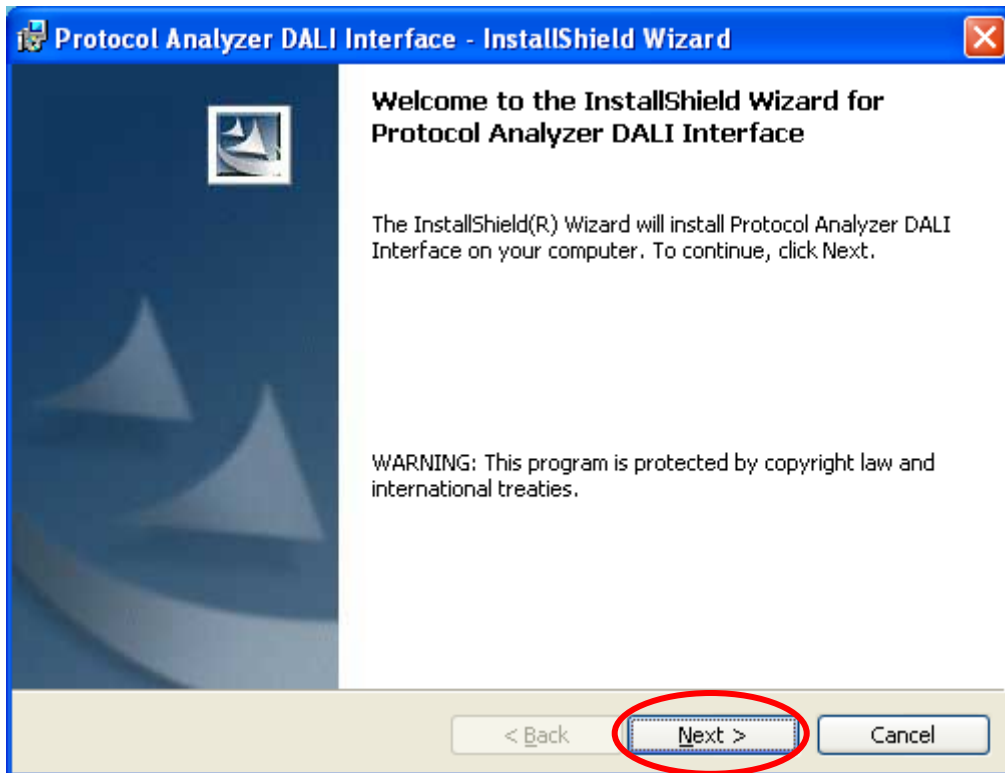


STEP 2. Click **Install**.

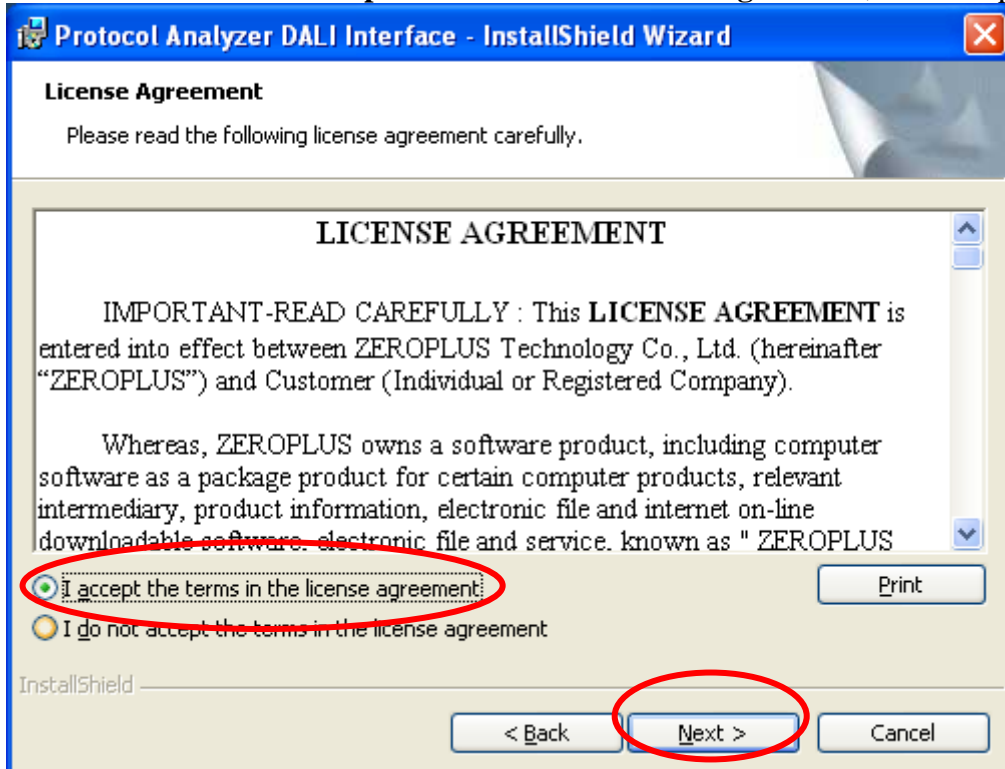




STEP 3. Click Next.



STEP 4. Select **I accept the terms in the license agreement**, and then press Next.





STEP 5. Fill in users' information in the below dialog box and click **Next**.

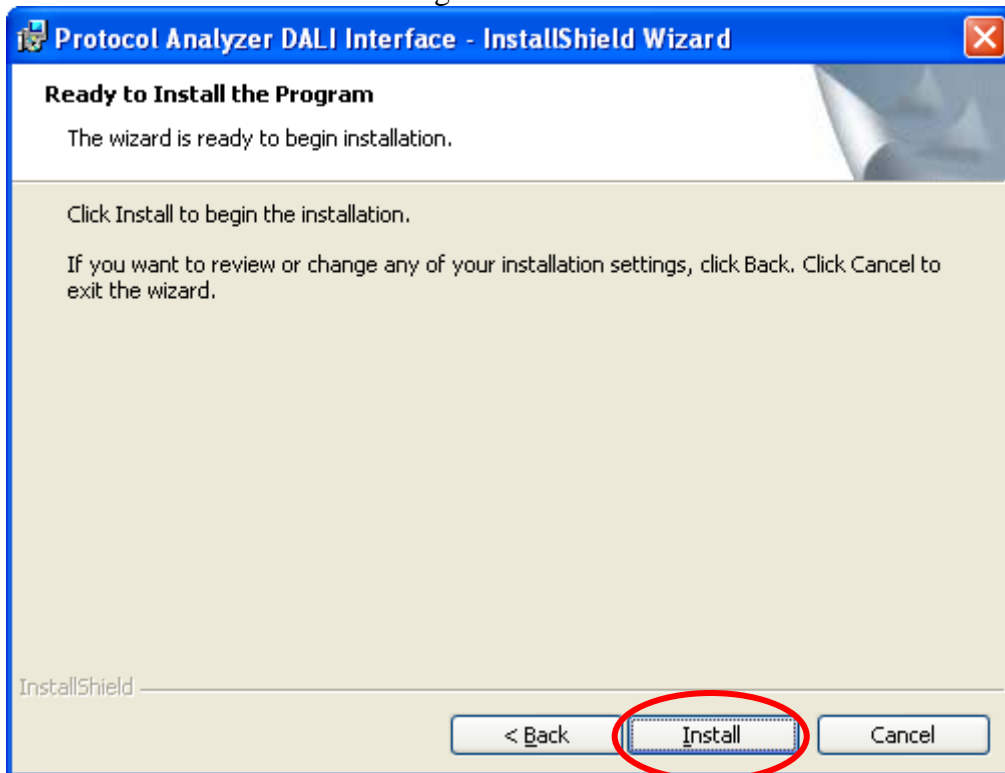
The dialog box is titled "Protocol Analyzer DALI Interface - InstallShield Wizard". It contains a section titled "Customer Information" with the instruction "Please enter your information." Below this are two text input fields: "User Name:" with the text "Microsoft" and "Organization:" with the text "User". There are two radio button options: "Anyone who uses this computer (all users)" which is selected, and "Only for me (Microsoft)". At the bottom, there are three buttons: "< Back", "Next >" (which is circled in red), and "Cancel".

STEP 6. Select **Complete** and then click **Next**.

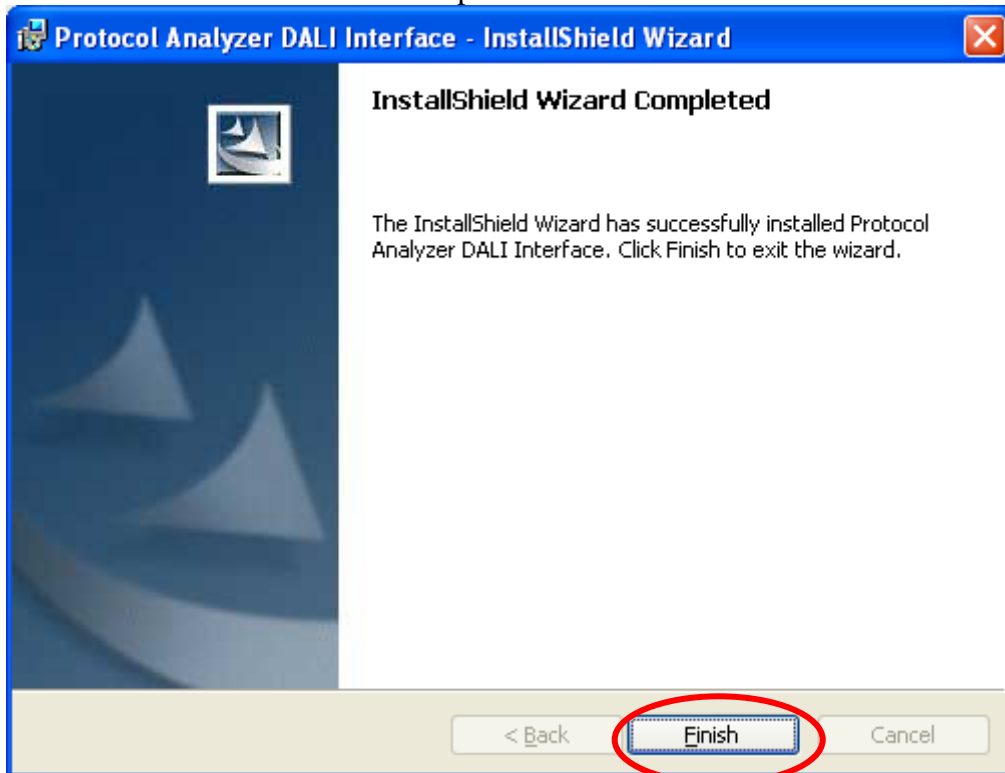
The dialog box is titled "Protocol Analyzer DALI Interface - InstallShield Wizard". It contains a section titled "Setup Type" with the instruction "Choose the setup type that best suits your needs." Below this is the text "Please select a setup type." There are two radio button options: "Complete" which is selected, and "Custom". The "Complete" option has a description: "All program features will be installed. (Requires the most disk space.)". The "Custom" option has a description: "Choose which program features you want installed and where they will be installed. Recommended for advanced users." At the bottom, there are three buttons: "< Back", "Next >" (which is circled in red), and "Cancel".



STEP 7. Click **Install** to begin the installation.



STEP 8. Click **Finish** to complete the installation.





3. User Interface

In the configuration, please refer to the below images to select options of setting DALI Interface module.

DALI Interface Configuration Dialog Box

| Item | Color | Data Format |
|---------|-------|-------------|
| Start | | Default |
| Address | | Default |
| Command | | Default |
| Data | | Default |
| Stop | | Default |

Pin Assignment:

DALI Interface: It is the Data Transmission Channel.

Protocol Analyzer Property:

Baud Rate: Users can set it in the range from 1 to 10000000 as their requirements or select the value (1200, 2400, 4800, 9600, 19200, 38400, 57600, 115200, 230400, 460800 and 921600) from the pull-down menu, and the default is 1200.

Auto: When the option is selected, the baud rate will be judged automatically, and it is available when the error is small.

Transmission Direction: Set the Direction to MSB->LSB or LSB->MSB.

Data Reverse Decoding: The Protocol Analyzer DALI Interface uses two wires to transmit the data. When it is decoded, one wire is enough, so the other wire is used as the Data Reverse Decoding.

Decode the Standard Command and the Special Command: It can be switched between decoding the specific Command and not decoding the specific Command. That is to say, if the option is not selected, the specific Command will not be decoded.

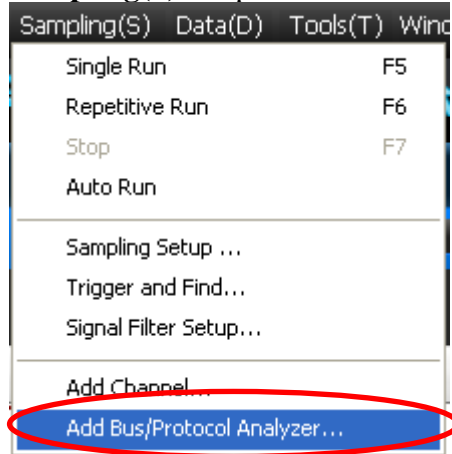
Protocol Analyzer Format:

The Color of each Item can be varied as the users' requirements. The Items (Address, Command and Data) can be set as Binary, Decimal, Hexadecimal, ASCII or Default. And the Data Format of these Items (Address, Command and Data) in the Waveform Display Area and Packet List is controlled by the Protocol Analyzer. The default Data Format is controlled by the main program and the Data Format of these items (Address, Command and Data) is the Default.

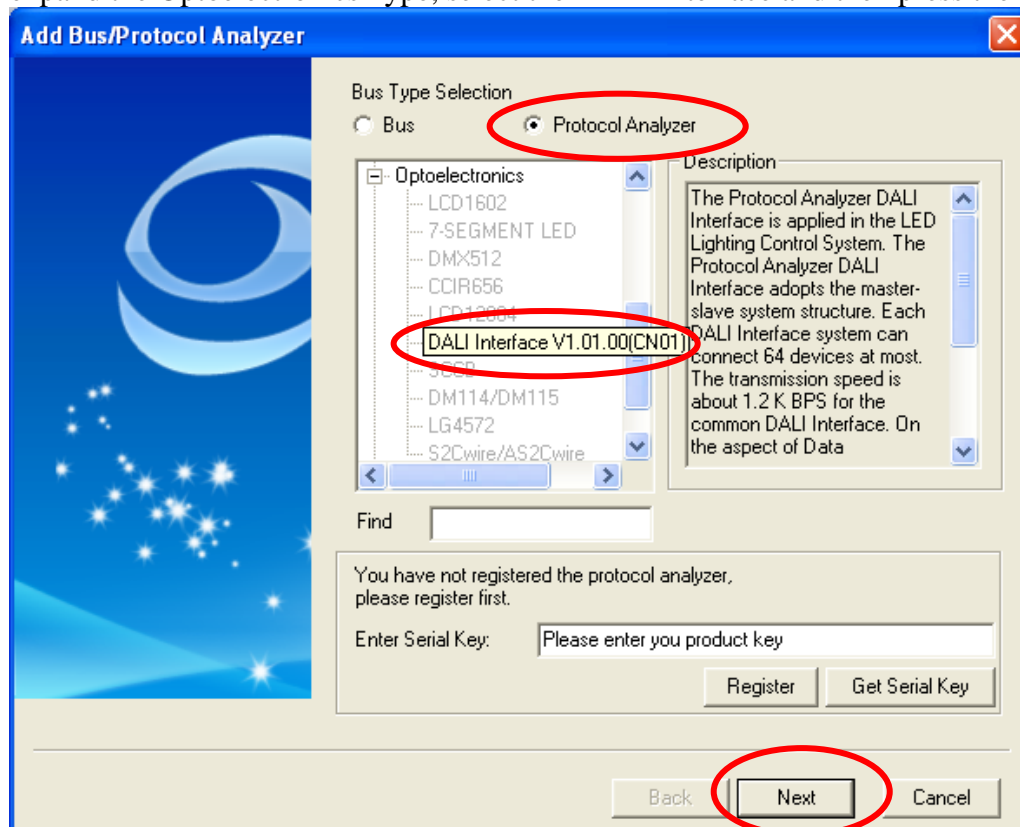


4. Operating Instructions

STEP 1. Select the **Add Bus/Protocol Analyzer** item on the pull-down menu of the **Sampling(S)** to open the **Add Bus/Protocol Analyzer** dialog box.

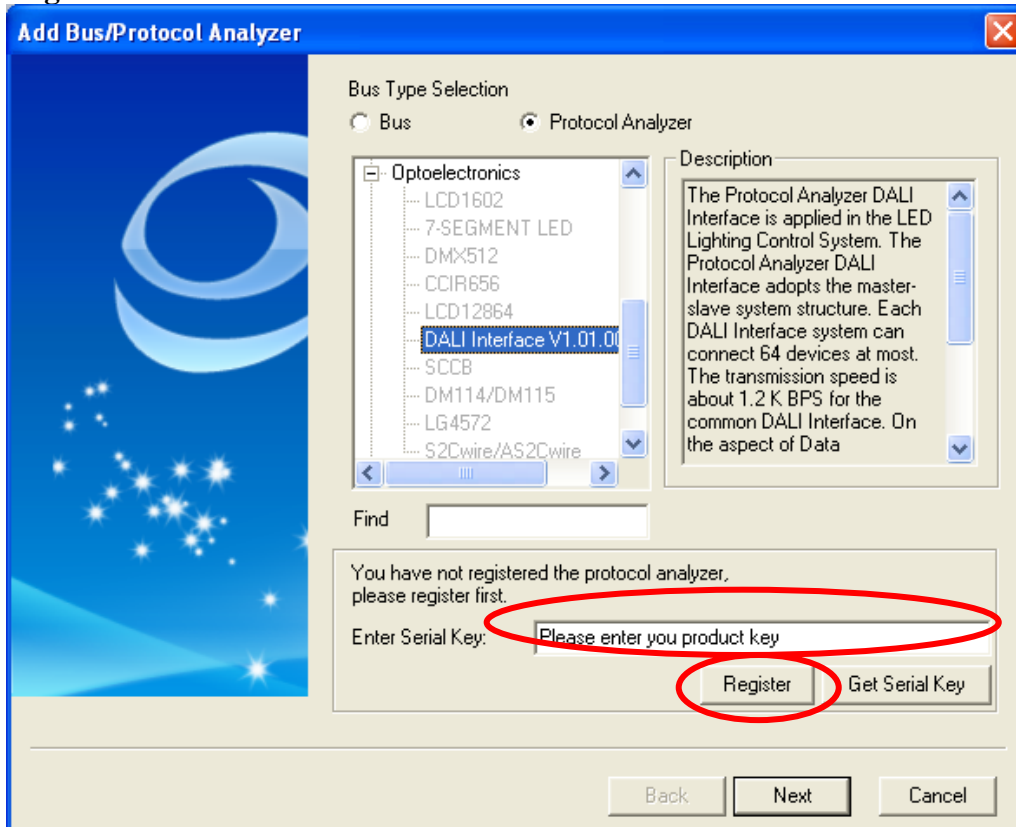


STEP 2. Select the Protocol Analyzer item in the Add Bus/Protocol Analyzer dialog box, expand the Optoelectronics Type, select the DALI Interface and then press the **Next**.

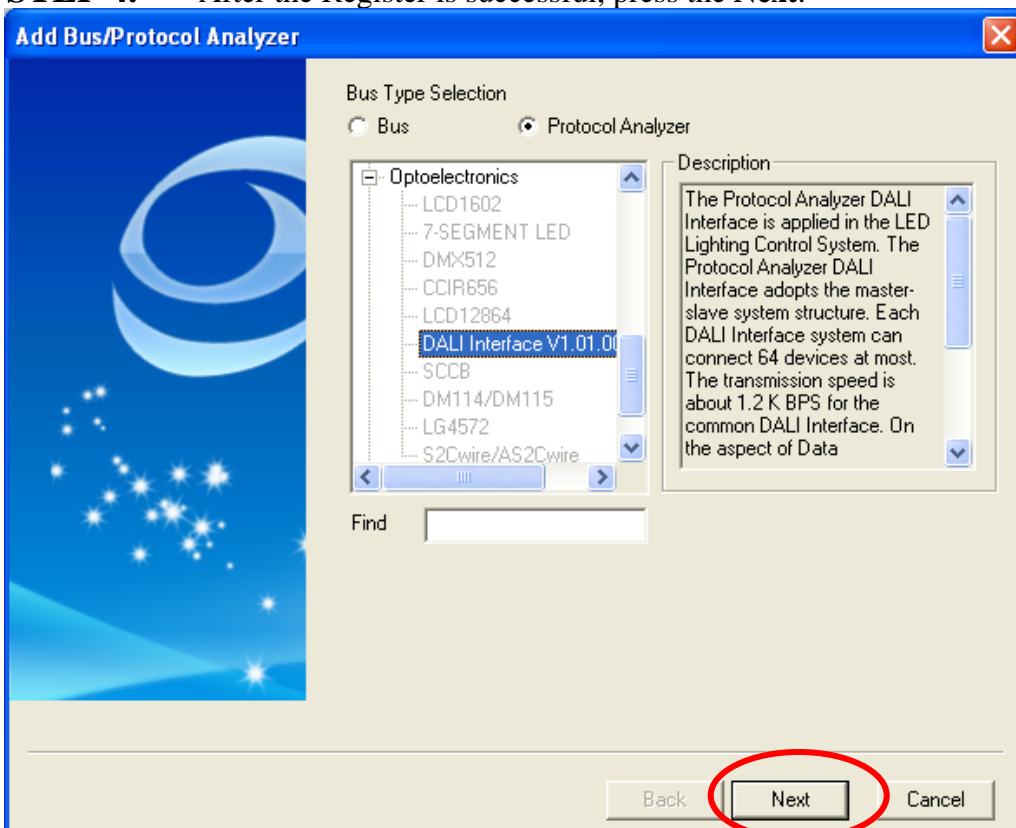




STEP 3. Enter the Serial Key of the DALI Interface under this Model, and then press the **Register**.



STEP 4. After the Register is successful, press the **Next**.





STEP 5. Open the PROTOCOL ANALYZER DALI Interface dialog box and set the **Channel**.

The screenshot shows the 'PROTOCOL ANALYZER DALI Interface' dialog box. The 'Pin Assignment' section has a 'Channel' dropdown menu set to 'A0', which is circled in red. The 'Protocol Analyzer Property' section shows 'Baud Rate' set to 1200, 'Auto' unchecked, 'Data Reverse Decoding' unchecked, 'Transmission Direction' set to 'MSB->LSB', and 'Decode the Standard Command and the Special Command' unchecked. The 'Protocol Analyzer Format' section shows a table with columns for Item, Color, and Data Format. The items are Start, Address, Command, Data, and Stop. The colors are cyan, orange, pink, green, and red respectively. The data format for all items is set to 'Default'. At the bottom, there are buttons for 'Default', 'Back', 'Next', and 'Cancel'.

STEP 6. Set the **Protocol Analyzer Property**.

The screenshot shows the 'PROTOCOL ANALYZER DALI Interface' dialog box. The 'Protocol Analyzer Property' section is circled in red. It shows 'Baud Rate' set to 1200, 'Auto' unchecked, 'Data Reverse Decoding' checked, 'Transmission Direction' set to 'MSB->LSB', and 'Decode the Standard Command and the Special Command' checked. The 'Protocol Analyzer Format' section shows a table with columns for Item, Color, and Data Format. The items are Start, Address, Command, Data, and Stop. The colors are cyan, orange, pink, green, and red respectively. The data format for all items is set to 'Default'. At the bottom, there are buttons for 'Default', 'Back', 'Next', and 'Cancel'.



STEP 7. Set the Color of each Item and the Data Format of the Items (Address, Command and Data).

PROTOCOL ANALYZER DALI Interface

Pin Assignment
Channel: A0

Protocol Analyzer Property
Baud Rate: 1200 (Min:1, Max:10000000) ☐ Auto ☒ Data Reverse Decoding
Transmission Direction: MSB->LSB ☒ Decode the Standard Command and the Special Command

Protocol Analyzer Format

| Item | Color | Data Format | Item | Color | Data Format |
|---------|-------|-------------|------|-------|-------------|
| Start | | Default | Data | | Default |
| Address | | Default | Stop | | Default |
| Command | | Default | | | |

Default Back Next Cancel

STEP 8. Press the **Next** to finish all settings.

PROTOCOL ANALYZER DALI Interface

Pin Assignment
Channel: A0

Protocol Analyzer Property
Baud Rate: 1200 (Min:1, Max:10000000) ☐ Auto ☒ Data Reverse Decoding
Transmission Direction: MSB->LSB ☒ Decode the Standard Command and the Special Command

Protocol Analyzer Format

| Item | Color | Data Format | Item | Color | Data Format |
|---------|-------|-------------|------|-------|-------------|
| Start | | Default | Data | | Default |
| Address | | Default | Stop | | Default |
| Command | | Default | | | |

Default Back **Next** Cancel



STEP 9. Please enter the Bus Name, select **Yes, please delete** or **No, please reserve** and then press **Finish**.

Add Bus/Protocol Analyzer

Please input the Bus name

BUS

Do you want to delete the other Buses and channels in the software?

☐ Yes, please delete

☒ No, please reserve

Back Finish Cancel

